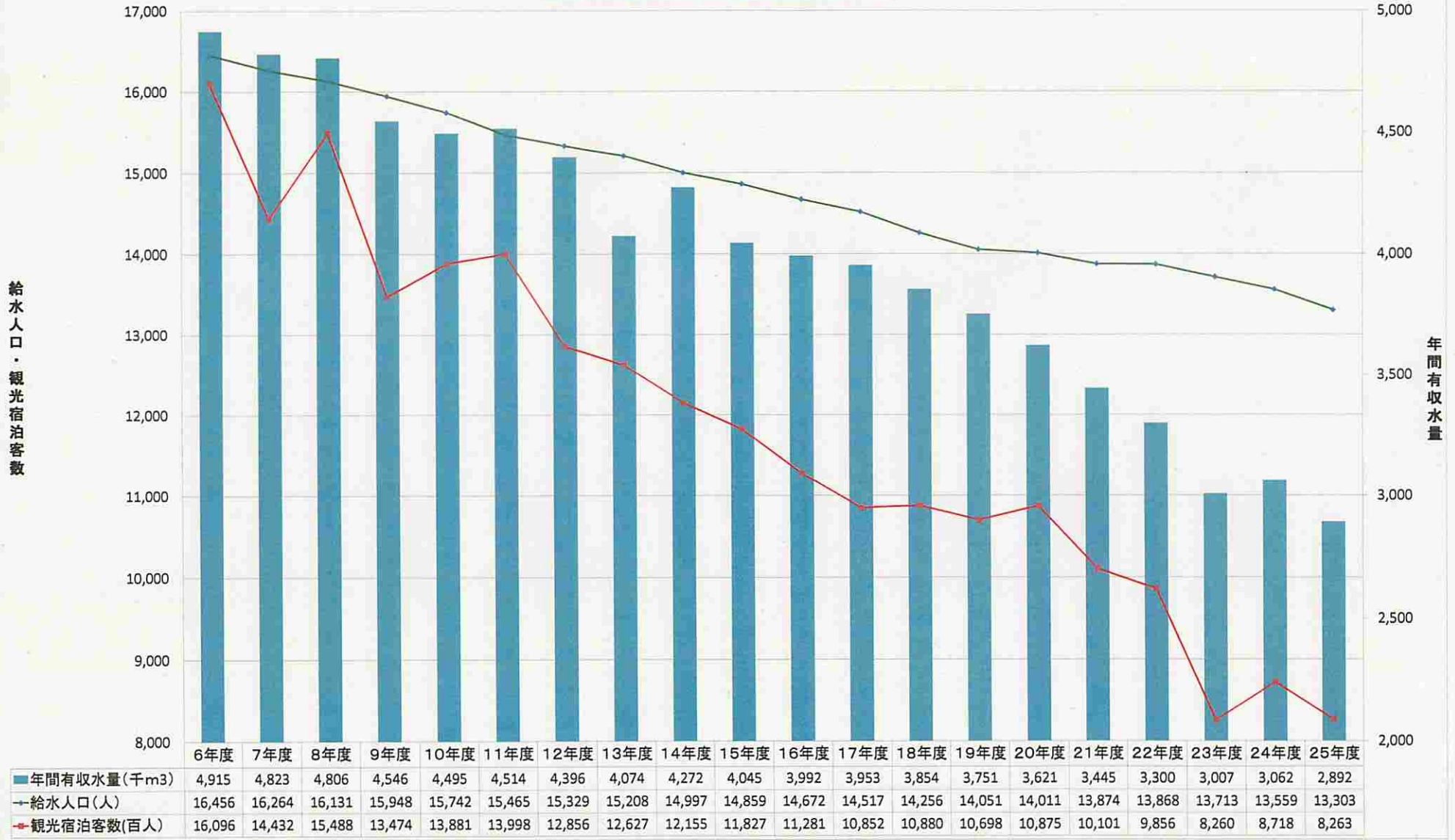
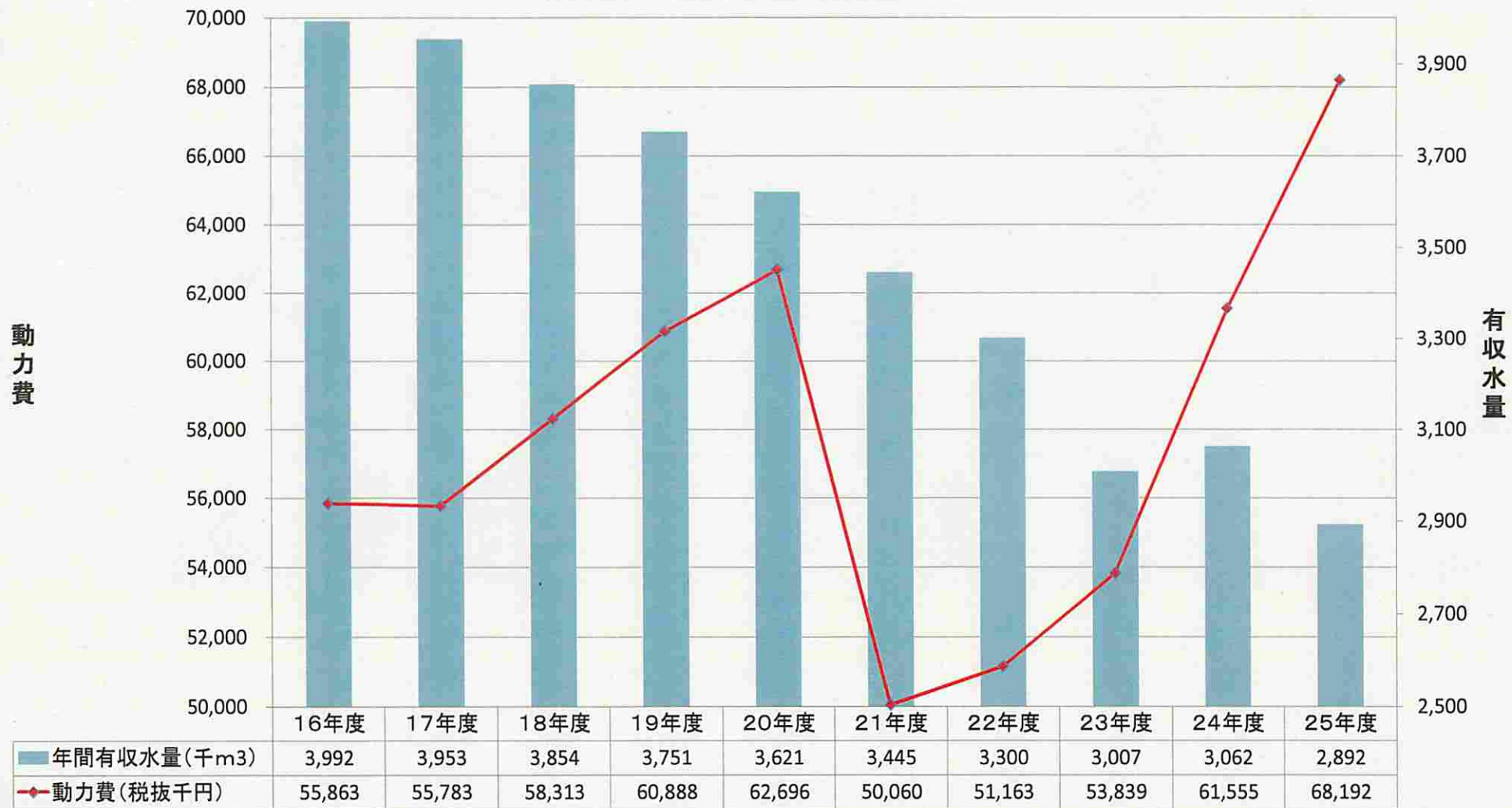


観光宿泊客・給水人口・有収水量推移



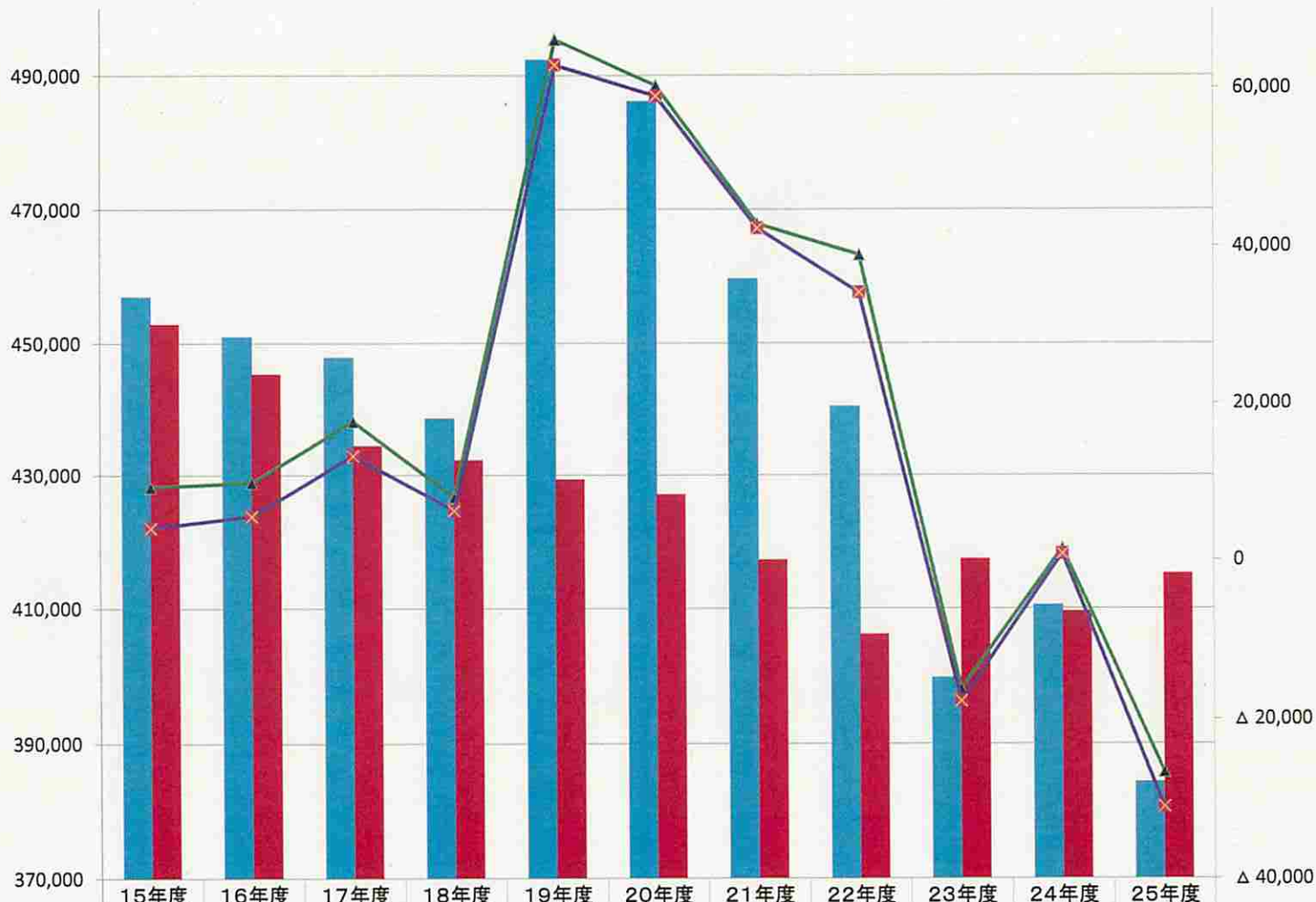
## 動力費と有収水量の推移



## 収益・費用・利益の推移

総収益・総費用

経常利益・当期純利益



■ 総収益 (千円)	456,946	450,897	447,785	438,618	492,352	486,145	459,623	440,381	399,742	410,471	384,331
■ 総費用 (千円)	452,836	445,301	434,498	432,298	429,400	427,145	417,347	406,263	417,455	409,612	415,282
▲ 経常利益 (千円)	9,323	9,894	17,707	8,027	66,128	60,317	42,824	38,899	△ 16,198	1,480	△ 26,578
✕ 当年度純利益(千円) A	4,110	5,596	13,287	6,320	62,952	59,000	42,276	34,118	△ 17,713	859	△ 30,951